

WORLD READY

2022 STUDY ABROAD STUDENT GUIDE

**THE GUIDE FOR STUDENTS WHO
WANT TO EXPERIENCE AUSTRALIA**



WELCOME TO ECU —

STUDY ABROAD PROGRAM

A Study Abroad program is the perfect way to expand your global citizenship. You get to live, work and study in a different country for up to a year, immersing yourself in the culture and ending the program with a deeper understanding of how you can contribute to the world.

At ECU, we know this is an integral part of our Study Abroad students' academic and personal journey, so we invest in the experience.

From the time you enquire to the time you enrol, our expert staff will guide you. We help you select your units, submit an application, accept your place and explore what ECU has to offer so you can make good use of your time abroad. In special circumstances, we can also explore if undertaking Study Abroad units online from your home country can work for you as well.

This is the key: how can we help you create an unforgettable study experience?

We love to hear from future Study Abroad students. Please reach out today

international.office@ecu.edu.au

CONTENTS

Welcome to ECU	2
ECU Campuses	3
What You Should Know About Study Abroad at ECU	4
10 Best Things to do Around Perth	6
10 Ways to See WA	8
Two Minutes With Our Academics	9
Undergraduate Popular Units	15
Postgraduate Popular Units	21
Your Study Abroad Journey	23
Facilities, Services & Support	24
Student Accommodation	25
Frequently Asked Questions	26



Ranked in the world's
TOP 100 UNIVERSITIES
under 50 years old.



The top public university in Australia
for undergraduate teaching quality
six years in a row.

ECU CAMPUSES

**WE ARE LOCATED OVER THREE
CAMPUSES IN BEAUTIFUL
WESTERN AUSTRALIA.
ALL OF OUR CAMPUSES CAN
BE ACCESSED CONVENIENTLY VIA
PUBLIC TRANSPORT.**

JOONDALUP CAMPUS

ECU's spacious and modern main campus is in Joondalup, 25km north of Perth. Joondalup is a busy neighbourhood and home of Lakeside Joondalup Shopping Centre. The Joondalup Campus is connected to the train station and other key places by the free Central Area Transit (CAT) bus network.

25
mins



ECU Joondalup Campus
from Perth city by train

MOUNT LAWLEY CAMPUS

ECU's boutique campus is located in the thriving cultural hub of Mount Lawley, 4.5km from the centre of Perth. The Mount Lawley Campus offers courses in creative arts, media, communications, design and performing arts, and offers an inspiring and buzzing artistic vibe.

15
mins



ECU Mount Lawley Campus
from Perth city by bus

SOUTH WEST CAMPUS

Located two hours' drive south of Perth, ECU's South West Campus in Bunbury is the largest university campus in regional Western Australia. The South West Campus offers courses in commerce, conservation and environmental science, environmental health, health science, nursing and midwifery, social work, and teacher education.

2
hours



ECU South West Campus
from Perth city by car



WHAT YOU SHOULD KNOW ABOUT STUDY ABROAD AT ECU

STUDY ABROAD IS A FANTASTIC LEARNING ABROAD EXPERIENCE. WE WANT TO MAKE SURE YOU CREATE THE BEST PROGRAM, SO WE'VE OUTLINED THREE KEY THINGS YOU SHOULD KNOW.

1. STUDY ABROAD COURSE CODES

Here are the course codes for Study Abroad:

- X01 Study Abroad Undergraduate One Semester
- X17 Study Abroad Undergraduate Two Semesters
- X02 Study Abroad Postgraduate One Semester
- X18 Study Abroad Postgraduate Two Semesters

You have the option to study up to two semesters in Study Abroad in undergraduate or postgraduate mode. This would include either 3–4 units in one semester or 6–8 units in two semesters.

It is very important to make sure you add your unit selection to your course application. This will enable us to review your units to see if they are all available and if you need to meet any additional requirements. Having a complete application will save you lots of time.

2. SELECTING YOUR UNITS

Selecting units can seem a little daunting. There are four easy ways to find the best units:

- Head to pages 15–22 of this guide to check out over 300+ unit options
- Search an ECU degree for units that match your interest (e.g. Bachelor of Laws)
- Head to the ECU Handbook and search by keyword to find a unit www.ecu.edu.au/handbook
- Chat to an ECU Authorised Agent www.ecu.edu.au/future-students/applying/find-an-authorised-agent or to ECU Staff international.office@ecu.edu.au

Tailored Study Abroad students from Japan visiting Perth's beautiful beaches.





Students outside ECU's iconic Chancellery Building at the Joondalup Campus.

3. TUITION FEES

ECU has great value Study Abroad tuition fees. In 2022 they are split into Group A and Group B:



FEE GROUP A

Includes hundreds of units from disciplines in arts, business, computing, design, economics, education, humanities, law, mathematics, science (non lab-based) and social science:

- 45 credit points (3 units): \$5,175 AUD
- 60 credit points (4 units): \$6,900 AUD



FEE GROUP B

Includes a special selection of units in the disciplines of engineering, nursing, paramedicine and science (lab-based):

- 45 credit points (3 units): \$7,725 AUD
- 60 credit points (4 units): \$10,300 AUD

Make sure you always check your tuition fees by using our Fees Calculator apps.ecu.edu.au/fees-calculator for the latest information.

It's really simple to use. Select the year you plan to commence > International Onshore Student > Study Abroad > search the Study Abroad tuition fee for individual units.

"Facilities like the Student Hub helped me a lot in the beginning as it was really organised and helpful. The campus is great too – I would say ECU has a very well-developed studying environment."

Marius Pischke is from Germany and studied environmental and process engineering with the School of Engineering.



10 BEST THINGS TO DO AROUND PERTH



Image courtesy of Tourism Western Australia



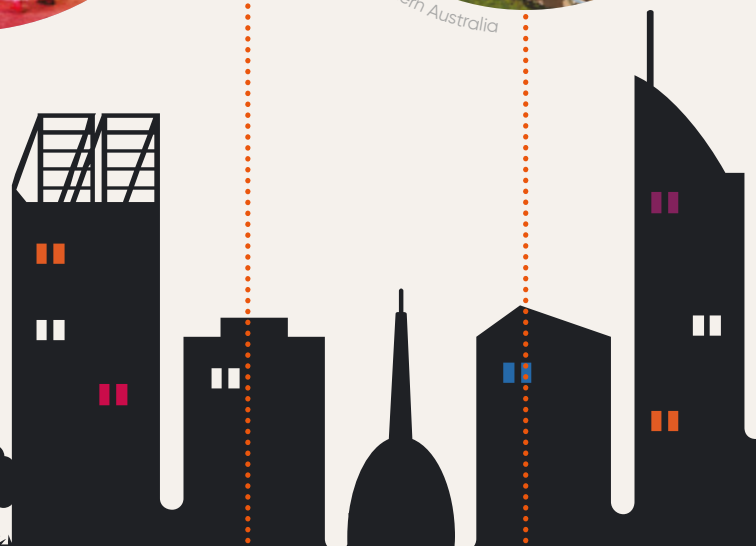
Image courtesy of Tourism Western Australia



Image courtesy of Tourism Western Australia



Image courtesy of Tourism Western Australia



1

Go see a film at one of several open air cinemas, including one on ECU's Joondalup Campus!

2

Attend a major sporting event or concert at Optus Stadium, voted the World's Best Stadium for 2018.¹

3

Get along to one of Perth's annual international arts festivals – Fringe World Festival and Perth Festival.

4

Visit Yagan Square, a mecca for cafés, bars and restaurants.

5

Go for a swim in the Scarborough Beach Pool or the ocean.

Sources:

1. The Stadium Business Awards 2018
2. Austradium Awards 2018



Image courtesy of Tourism Western Australia



Image courtesy of Michael Haluwana from Aeroture



Image courtesy of Tourism Western Australia

6

Attend an event at RAC Arena, voted Australia's Best Indoor Stadium 2018.²

7

Enjoy a free guided walk in spectacular Kings Park, overlooking the city.

8

Take a ferry across to Rottnest Island and take a quokka selfie.

9

Explore historic and arty Fremantle, only 20km from the Perth city centre.

10

Visit Boola Bardip (WA Museum) and immerse yourself in Western Australia's many stories of our people, our places and our culture.

10 WAYS TO SEE WA



Images courtesy of
Tourism Western Australia

1 CAMELS AT SUNSET ON CABLE BEACH, BROOME

Adventure north to Broome and the iconic Cable Beach, with its white sand, red cliffs and turquoise water.

2 JOFFRE GORGE, KARIJINI NATIONAL PARK

Explore Karijini National Park and the Hamersley Range, with gorges, watercourses and mountains carved over millions of years.

3 NINGALOO REEF, CORAL BAY

Swim in Ningaloo Reef, the world's largest fringing reef, home to 500 marine species like turtles, manta rays and the famous Whaleshark.

4 THE PINNACLES, NAMBUING NATIONAL PARK

Take a day trip to Cervantes and the Pinnacles to experience the seafood, sandboarding and ancient rock formations.

5 MARGARET RIVER

Getaway to Margaret River and surrounds to explore the world-renowned cuisine, wineries, breweries, surf and accommodation.

6 JEWEL CAVE, NEAR AUGUSTA

Venture underground to explore prehistoric limestone caves like Ngilgi (Yallingup), Mammoth (Margaret River) and Jewel (Augusta).

7 VALLEY OF THE GIANTS, TREE TOP WALK

Trek to the Valley of the Giants and fall in love with the timber gods of the south as you brave Tingle's Tree Top Walk.

8 THE BIBBULMUN TRACK OVERLOOKING PERKINS BEACH, ALBANY

Hike the Bibbulmun Track or cycle the Munda Biddi Trail, both around 1,000kms and stretching from the Perth Hills to Albany.

9 BLUFF KNOLL, STIRLING RANGE NATIONAL PARK

Catch the sunrise at the top of Bluff Knoll, then onto Castle Rock at the Porongurups to tackle the Granite Skywalk for sunset.

10 KANGAROOS AT LUCKY BAY, CAPE LE GRAND NATIONAL PARK

Discover the beaches of Denmark, Albany, Bremer Bay and Esperance, with endless opportunities to snorkel, dive, swim, surf and capture the wildlife.

TWO MINUTES WITH OUR ACADEMICS —

ECU HAS HUNDREDS OF UNITS (AUSSIE LINGO FOR "SUBJECTS" OR "COURSES") TO CHOOSE FROM AS PART OF YOUR STUDY ABROAD SEMESTER. THIS INCLUDES ALL OF OUR SCHOOLS.

WE'VE SAT DOWN WITH SOME OF OUR ACADEMICS TO CHAT ABOUT TEN EXCITING UNITS ACROSS OUR SCHOOLS. READ THROUGH AND SEE IF ANY MATCH YOUR STUDY DIRECTION.



ARTS & HUMANITIES

**CAMERA WORK AND LIGHTING WITH
DR DUNCAN BARNES IN SEMESTER 1 OR 2
AT MOUNT LAWLEY**

Do you need to see a portfolio of work from students when they apply?

No, the unit is open to anyone who is interested in furthering their photographic skills. We have students from majors like design, journalism and marketing. We also have students from science, engineering and education. Students realise that having photographic literacy can benefit a whole range of career choices.

Have students gone on to exhibit work or win competitions?

Many students have gone on to exhibit work with galleries (like the Perth Centre for Photography), create their own books and/or won awards in competitions. It never ceases to amaze me, the improvement in student's photographic work from the beginning of the unit through to the end.

What kind of equipment and labs do students have access to?

They have 24-hour access to computer labs with Adobe products like Photoshop and Lightroom. We supply students with the latest Canon digital SLR cameras and accessories or they can use their own digital SLR camera.

Can you describe the photogenia exercise?


We are looking to get students to master all the camera controls. For example, slow shutter speeds to exploit the energy of blur in photographs or fast to freeze movement. The exercise also encourages students to consider the qualities of light at different times of the day and how that affects the mood within images.

Are students able to select their own theme for the personal project?

Absolutely. After finishing the first project (photogenia) students are encouraged to explore their own ideas in a project. This might be a street photography project or a photographic diary of their own life or a fashion shoot.

What unit/s would be a great accompaniment to this one?

PHO1130 Studio Work where students work with artificial studio lighting in our studios, as well as location-based shooting with portable strobe kits and equipment. Or PHO2105 Photowork is great for those who like the newfound buzz around analogue film-based photography.



"The facilities at the Mount Lawley and Joondalup campuses were new and modern. And most of my tutors had worked in the communications and marketing industry, which made the units interesting, relevant and inspiring."

Caroline Schlesinger is from Denmark and studied in the School of Arts and Humanities, and the School of Business and Law.



Students outside the School of Business and Law, Building 2, Joondalup Campus.

**UNIT
FBL3501**

BUSINESS & LAW

BUSINESS PRACTICUM WITH ASSOCIATE PROFESSOR DENISE JACKSON IN SEMESTER 1 OR 2 AT JOONDALUP

**Can you share some
placement examples?**

West Coast Eagles, Duxton Hotel, even West Media, Spacecubed, Novotel, Lands and Heritage, among others. It's a long list! In addition, ECU, including the School, host up to 10 students a semester.

Do students get a say in where they go?

Students can seek their own placements and projects, or we can match them. Some students opt for their current workplace to broaden their skills in a particular industry and add value to their employer.

**Do you accept Study Abroad students
not enrolled in business or law?**

Absolutely. Virtual placements are available too. However, all projects have a business context, so at the matching stage students need to demonstrate they have the skills to competently engage in the project.

How do students apply for a placement?

We ask students to send us an application form, their LinkedIn profile and a 3-minute video introducing themselves to potential hosts. We also have a virtual interview. We want a clear

idea about where the student is headed and if we can match that with an industry placement. We also chat to Study Abroad students before they apply.

**The commitment is 100-150 hours.
Does that mean it's roughly one day
a week for the semester (13 weeks)?**

The placement is based on student and industry needs, so it's flexible. But, yes, it is typically 1-2 days per week over the 13-week semester.

**UNIT
NUM2306**

NURSING & MIDWIFERY

ADULT HEALTHCARE 1 WITH AMANDA GRAF IN SEMESTER 1 OR 2 AT JOONDALUP

**Are students in this unit in the first or
second year of their nursing studies?**

They are usually in their second year. However, the unit is offered each semester and we invite Study Abroad students to nominate.

**Are the case scenarios in the
unit theoretical?**

Yes, they are theory based. Simulation happens in the practical units.

**Can you tell us more about the
key case scenarios throughout
the semester?**

The unit focuses on understanding when things go wrong within the human body,

We start with principles that are involved in many disease processes for example inflammation, pain management and the immune system. It's important for the nurses to understand the pathophysiology behind the clinical manifestation; the signs and symptoms the patient presents with in order to provide appropriate nursing care.

**What can students expect of the
interactive learning activities in class?**

The students are often asked to work in groups to complete case studies or review scenario questions. The group work really appeals to students as it

helps them form study groups. The real-life case studies are always well received.

**What unit/s would be a great
accompaniment to this one?**

Students with the relevant nursing education might consider NPU2303 Nursing Practice 3, which runs alongside this unit. This practice unit includes 160 hours of clinical practice and clinical workshops including simulation activities.



Students in one of four SuperLabs in the new Science building on the Joondalup Campus.

**UNIT
SCH1133**

MEDICAL & HEALTH SCIENCES

HUMAN GENETICS WITH DR JEMMA ANN BERRY IN SEMESTER 1 AT JOONDALUP

Do students need a strong background in human biology?

We start right at the beginning, so while a background in human biology or biological sciences is useful, it's not required. We have students from all different backgrounds.

What kind of hands-on experience can students expect in the unit?

Students get access to ECU's new state-of-the-art SuperLabs and undertake a variety of different experiments. For example, they work in pairs to extract their own DNA, make bacteria glow in the dark and examine their own chromosomes.

What kind of equipment do students have access to during labs?

All the latest equipment in the new SuperLab building. This includes microscopes, centrifuges, PCR thermocyclers, micropipettes, gel imaging equipment and much more.

What do students say about this unit?

They love the hands-on elements; so being able to apply lecture content in the laboratory. Students often comment that the unit is well organised and they feel they're well supported by the lecturers and demonstrators.

What do you think is the most interesting thing about the unit?

It would have to be working with your own cells and DNA and getting to really understand the role of DNA in our everyday lives.

What unit/s would be a great accompaniment to this one?

SCH2142 Forensic Genetics follows on nicely. It provides a different way of looking at DNA and human interactions. It focuses on the things that make us different and how that can be used by law enforcement to identify criminals or victims of crime.

**UNIT
ENS5240**

ENGINEERING

INDUSTRIAL CONTROL WITH DR OCTAVIAN BASS IN SEMESTER 2 AT JOONDALUP

What is the student profile for this unit?

The unit is offered to undergraduates in their fourth year and postgraduates in their first year. It is part of all our courses, reflecting the fact that control engineering cuts across specialisations.

What kind of equipment do students have access to during labs?

State-of-the-art real industrial automation equipment from Schneider Electric: Programmable Logic Controllers and Supervisory Control and Data Acquisition Systems. Our students who have done well in the lab are sought after. This unit lands jobs.

What is the Schneider Electric laboratory?

It's our Instrumentation, Control and Automation laboratory. It gives students comprehensive exposure to the highly relevant field of industrial automation. We are regularly being approached to make recommendations for internships.

Can you provide some examples of projects students have completed?

Students implement a batch process in which a liquid at room temperature is pumped into a tank until a given level is reached, then the liquid is heated and mixed, after which it is evacuated.

Students also design closed-loop control systems to control the water level in a tank equipped with a variable speed pump and a drain valve.

What do you believe is the most interesting aspect of the unit?

The journey and the experience the lab offers. Students put in a lot of time and effort in the lab, and they get a great reward at the end. Simply put, in this unit students can take ownership of the problems and can fix them.

**UNIT
SCI2123**

SCIENCE

ASTRONOMY WITH ASSOCIATE PROFESSOR STEVEN HINCKLEY IN SEMESTER 2 AT JOONDALUP

Do students need a background in Astronomy to complete this unit?

No, we welcome students from all disciplines. Although an introductory Physics unit would set them up for Astronomy.

What does the astrophotography activity entail?

This is part of the Astronomical Observing Program where students photograph stellar objects.

What will be the theme of the astrophotography activity in 2021?

Students perform two activities. They study either the Moon or the Sun (we have solar telescopes to do this); and they study the outer Jovian planets like Jupiter and Saturn, their Moons and Rings. If other celestial

phenomena is occurring, they can switch their project. For example, last November Mercury transited across the face of the Sun. Students plan their observing program using software like Stellarium to predict the location of various celestial bodies. We recently acquired a 12-inch telescope to complement our class set of 8-inch telescopes. It's enhanced light collecting ability will give very good images of the outer planets. Also, if students have a specific interest in a particular celestial object, then they will be able to modify their observing program to suit their interest. The Horsehead nebula is always a favourite.

What kind of astronomical instruments do students have access to?

We have ten 8-inch Schmidt Cassegrain Telescopes students can borrow; one 12-inch PC controlled telescope; and ten Canon 450D Digital cameras. We also have extensive software available to process images and examine aspects of astronomy.

How much observation do students do outside of class?

All of it. They are given instruction in the laboratory on how to use the cameras and telescopes. Then they borrow a set and do their own observing. This allows them to look for observing sites that are not affected by background light pollution. They are also encouraged to use their smartphones for astrophotography.

**UNIT
SCI3150**

SCIENCE

SCIENCE PROJECT WITH DR EDDIE JOHN VAN ETEN AND DR MARK LUND IN SEMESTER 1 OR 2 AT JOONDALUP

Where have students been placed in the past?

They've had placements across government agencies and industries including the Perth Zoo, Dept. of Biodiversity, Conservation and Attractions, Forest Products Commission, and local government and councils. Consultancies include BMT Oceania, Hydrobiologia, Biostat, and Animal-Plant-Mineral.

Can you share an example of a professional placement?

Projects at the Perth Zoo have focussed on observing and analysing animal behaviour, which has assisted keepers and contributed to a better understanding of how to conserve these species. Another project is tracking bandicoots (quenda) in bushland reserves with the City of Stirling.

Can you share an example of a research project?

Students have studied local bushland and wetlands to find out more about the species, the ecology of these systems and the impacts of human

activities. Findings have helped local authorities improve their management of these bushlands and wetland areas.

Do you help match students with opportunities?

Yes, we have a list of projects and placements available.

Do Study Abroad students need to chat to you about a potential project or placement before they apply?

It's recommended they contact the unit coordinator before the start of the semester. This helps us work with the student on their desired placement or project, or match with an existing one.



ECU's new Science building features the world's largest Periodic Table and is equipped with state-of-the-art equipment for chemistry, biology, medical and health students.

**UNIT
DSE2210**

EDUCATION

TEACHING SENIOR SCHOOL DRAMA WITH DR CHRISTINA GRAY IN SEMESTER 2 AT MOUNT LAWLEY

Do students need a background in drama to complete the unit?

The unit is for students who want to teach drama. Some background in drama is beneficial, but not essential as we can support those who need it. The focus is on skills, strategies and processes to engage students in drama, as well as how to structure a really good lesson.

What stage of their degree are students at?

Generally, students are in the second year of their four-year degree.

Can you describe the practical work students undertake?

The practical work is fun! In fact, most of the workshops provide opportunities

for students to explore concepts in practical ways. They work in small groups to collaborate and learn, using skills in improvisation, and vocal and non-verbal communication. They use sound and lighting equipment too.

When students apply theory to practice, what are some of the outcomes?

Learning in drama is practical and in-the-moment. Tutors help students to apply theory to practice. We find that when we demonstrate and model the skills we want students to learn, it becomes so much clearer.

What is the class atmosphere like?

Class atmosphere is really important in our drama classes. We want students to have fun. To feel they are safe and belong. We take a student-centred approach and make sure everyone feels supported and valued.

What would you say to a Study Abroad student planning to enrol in this unit?

We would love to have you join us. Please don't hesitate to contact me if you would like further information. I'm the Coordinator of Dance and Drama Secondary Education and happy to assist you with study choices.

**UNIT
DAN3905**

WESTERN AUSTRALIAN ACADEMY OF PERFORMING ARTS (WAAPA)

CHOREOGRAPHY 3 WITH SUSAN PEACOCK IN SEMESTER 1 OR 2 AT MOUNT LAWLEY

What level of choreographic experience should students have?

One year of tertiary dance or upper-level high school is the minimum training required.

Would you recommend having a portfolio of work-to-date when applying?

A portfolio or at least one example of previous work is helpful in terms of placing students in a group matching their skill and experience.

Is this for a specific discipline or is it broad?

Choreography is open to ballet and contemporary students. Theoretically, other dance styles may also be possible. We invite applications.

Does this unit culminate in a performance?

There will be a studio assessment, which is like a performance, with simple lights and costume. It is usually viewed by peers, staff and assessors.

Can you explain how students are matched with performers?

Students cooperate and negotiate with each other to choose their peers as performers in their work. It's a democratic process. Everyone choreographs and everyone performs.

What is the weekly commitment for the unit?

The classes are 2 x 1.5 hrs per week, with rehearsals sometimes held out of hours. Rehearsals outside of class time are agreed within each cast and choreographer group.



'The Edith' Spiegel tent, our rare moving performance space, seen here at home on the Mount Lawley campus. ECU is the first university in the world to acquire its own Spiegel tent.



The Kurongkurl Katitjin building at the Mount Lawley Campus.



KURONGKURL KATITJIN

**ABORIGINAL HISTORIES OF THE PRESENT
WITH DR DARREN GARVEY IN SEMESTER 1
AT BUNBURY**

What discipline are students from?

We have students from a variety of backgrounds, including the social sciences, psychology, counselling and education. Everyone is welcome. With 70 different cultural groups and a world-renowned tradition that is inextricably linked to environments, this unit is an important insight for everyone into the culture, spiritually, diversity and variation of Aboriginal and Torres Strait Islander people.

Are there opportunities for students to explore content outside the classroom?

Yes, students undertake a field visit to former Roelands Mission, now an Aboriginal business focussing on family and youth projects.

Do guest speakers present to students?

Guest presenters are an important feature of the unit. This includes human rights presenters; Aboriginal people who work in family and children's services, and youth work; people who have been subject to government policy; crisis management workers; and 'clinical yarning' guests with experience working cross-culturally.

Can you tell us a little more about the 'Personal Stories' assessment?

It contextualises the socio-political and historical content of the unit by closely examining the life stories of Aboriginal people who were removed from their families. Theories, concepts and events

become more 'real' through the close examination of peoples' experience of them and their consequences.

How is the unit received by students?

Some of the material is confronting and challenging in a way that requires students to re-examine their pre-existing knowledge. This is facilitated by Mr Ken Hayward, an experienced lecturer who guides students through their responses, helping them to be critically reflective. Ken ensures students have fun as well as concentrating on serious matters.

What do you believe is the most interesting aspect of this unit?

Students are facilitated in a way that seeks their deep engagement and

reflection on issues such as racism. For some students, this is a transformative experience that is amazing and moving to witness.

To see them grapple with these realisations in the context of their professional roles is another interesting feature. Students leave energised, informed and inquisitive about how to continue their lessons and learnings.

Which unit/s would complement with this one really well?

ACS2122 Aboriginal Perspectives on the Environment and IAS3100 Indigenous Health.



The "Dambart Bilya Cultural Reflection Space" at the ECU Bunbury Campus.

UNDERGRADUATE

SEE BELOW FOR A LIST OF POPULAR UNITS

JO Available on the Joondalup Campus

ML Available on the Mount Lawley Campus

BU Available on the South West (Bunbury) Campus

* This unit has a prerequisite and is subject to ECU approval

ECU has hundreds of units to choose from. We've taken some of the hard work out of your review by providing you with a range of units across study areas and disciplines.

Visit the ECU Online Handbook www.ecu.edu.au/handbook to search by unit code or name for more information.

Keep in mind that we have many more units to choose from. If you don't find what you're looking for here, reach out to us.

	SEMESTER 1	SEMESTER 2	FEE GROUP
--	---------------	---------------	--------------

ARTS & HUMANITIES

ADVERTISING AND PUBLIC RELATIONS

ADV2220	Advertising Management	ML	–	A
ADV3426	Channel Planning	ML	–	A
PRN1000	Foundations of Public Relations	ML	–	A
PRN2225	Media Relations	–	ML	A
PRN3160	Social and Online Media Strategies	–	ML	A

ART AND DESIGN

PHO1125	Camera Work and Lighting	ML	ML	A
TDD1101	Design Drawing	ML	–	A
DES1106	Design Practices: Typography	–	ML	A
FAS1201	Enquiry for Garment	–	ML	A
GDI1100	Experience Design	ML	–	A
GDI2112	Game Studies	–	ML	A
FAS1105	Material Manipulation	ML	–	A
PHO3125	Photomedia Histories and Narratives	–	ML	A
VIS2130	Spatial Studio	–	ML	A
GDI2100	Web Design	ML	–	A

COMMUNICATIONS, MEDIA AND CULTURAL STUDIES

SAH2200	Audience Perception and Experience	–	ML	A
SAH1100	Communicating Ideas	ML	–	A
SAH1150	Creativity	ML	–	A
SCR3160	Documentary, Technology and Experience	ML	–	A
CMM1124	Media and Nation	ML	–	A
SPO1050	Screen Histories	ML	–	A
SPO1100	Screen Practice 1: Drama	–	ML	A
SAH1250	Storytelling and Meaning	–	ML	A

CREATIVE WRITING, JOURNALISM AND LITERATURE

JOU3209	Business and Data Journalism	–	ML	A
ENG1060	English Grammar for Professionals	–	BU	A
PHO3201	Photojournalism and Editorial Practice	ML	–	A

ENG2120	Popular Texts for Young People	–	ML	A
CCC1101	Texts and Meanings	BU	–	A

HISTORY AND POLITICS

POL2105	Australian Government: The Challenges of a Modern Democracy	ML	–	A
HIS1107	Australian History: Colonisation, Nationalism and Identity	ML	–	A
SWK2112	Australian Politics and Policy	–	BU	A
POL1106	Ideas that have Shaped the Modern World	–	ML	A
HIS3180	Modern China: The Rise of a Superpower	–	ML	A

COUNSELLING, CRIMINOLOGY AND PSYCHOLOGY

PSY1210	Biopsychology, Sensation and Perception	–	JO	A
SWK2114	Community Health and Well-being	–	BU	A
CRI1103	Criminology	JO	–	A
COU1101	Dynamic Models of Counselling	JO	–	A
CSV1103	Interpersonal and Helping Skills	JO	–	A
PSY1101	Introduction to Psychology	JO	JO	A
CSV1102	Introduction to Social Analysis	–	JO	A
YWK1101	Principles of Youth Work	–	JO	A
CRI2115	Psychology and Criminal Justice	JO	–	A
PSY1115	Psychology of Motivation and Emotion	JO	–	A
COU1102	Self Development 1	–	JO	A
CRI1107	The Criminal Justice Process	JO	–	A
CRI1104	The Psychology of Criminal Behaviour	–	JO	A
COU1201	Therapeutic Practice with Families and Couples	JO	–	A
CSV1203	Working with Groups	–	JO	A
YWK1220	Youth Issues	JO	–	A

UNDERGRADUATE

SEE BELOW FOR A LIST OF POPULAR UNITS

JO Available on the Joondalup Campus

ML Available on the Mount Lawley Campus

BU Available on the South West (Bunbury) Campus

* This unit has a prerequisite and is subject to ECU approval

		SEMESTER 1	SEMESTER 2	FEE GROUP
BUSINESS & LAW				
ACCOUNTING AND FINANCE				
ACC1100	Accounting I	BU JO	JO	A
ACC3201	Accounting Information Systems*	JO	BU JO	A
ECF1120	Finance I	JO	JO	A
ACC2700	Financial Reporting Standards*	JO	BU JO	A
BUSINESS IDENTITY				
MAN3810	Business Ethics	JO	JO	A
SBL1600	Business Identity and Protocols	BU JO	BU JO	A
SBL2100	Cultural Business Intelligence	JO	–	A
HOSPITALITY AND TOURISM MANAGEMENT				
TSM3105	Contemporary Issues in Tourism and Hospitality	–	JO	A
TSM3107	Ecotourism	–	JO	A
HOS2110	Food and Beverage Management	JO	–	A
HOS3320	Hospitality Facilities Management	JO	–	A
TSM2111	Introduction to Hospitality and Tourism	JO	–	A
HOS3211	Management of Hospitality Finance	–	JO	A
TSM2105	Tourism Planning and Development	–	JO	A
TSM2650	Travel, Destination and Visitor Management	–	JO	A
INTERNATIONAL BUSINESS				
INB3600	Business in Asia	JO	–	A
INB2102	International Business	JO	–	A
MAN3705	International Negotiation	–	JO	A
LAW AND LEGAL STUDIES				
LAW5620	Civil Procedure I*	JO	–	A
LAW2106	Intellectual Property Law	JO	–	A
LAW1100	Legal Framework I	JO	BU JO	A
SPM3113	Sport and Leisure Law*	JO	–	A
MANAGEMENT AND HRM				
MAN2601	Employment Relations	–	JO	A
MAN2145	Human Resource Management	JO	JO	A
MAN3121	Leadership	JO	JO	A
FBL5010	Managing People and Organisations	JO ML	JO ML	A

		SEMESTER 1	SEMESTER 2	FEE GROUP
MARKETING				
SBL1300	Business Environments & Markets	BU JO	JO	A
BUS3100	Business Research Practices	JO	JO	A
MKT2608	Consumer Behaviour	JO	JO	A
SPM2610	Marketing and Communications for the Service Industries	–	JO	A
FBL5020	Marketing Leadership	JO ML	JO ML	A
MKT1600	Marketing Principles & Practices	JO	JO	A
MKT2605	Promotional Marketing	JO	JO	A
PROJECT MANAGEMENT				
MAN3612	Project Management	JO	–	A
MAN2170	Starting up a Project	JO	JO	A
SPORT AND EVENT MANAGEMENT				
TSM2202	Introduction to Event Management	JO	JO	A
SPM2104	Managing Recreation Services and Facilities	JO	–	A
SPM3655	Sport and Events Funding and Finance	JO	–	A
SPM1102	Sport and Recreation Leadership and Programming	JO	–	A
SPM3114	Sport Venues and Events	–	JO	A
ENGINEERING				
AVIATION				
SCA1125	Fundamentals of Flight*	JO	–	B
SCA1117	Human Factors in Aviation*	–	JO	B
CHEMICAL ENGINEERING				
ENS3111	Chemical Thermodynamics*	–	JO	B
ENS5561	Minerals and Solids Processing*	JO	–	B
ENS3113	Reaction Engineering*	–	JO	B
CIVIL, CIVIL AND ENVIRONMENTAL ENGINEERING				
ENS5112	Construction Site Management*	–	JO	A
ENS5252	Construction Technology*	JO	–	B
ENS5161	Environmental and Process Risk Management*	JO	–	B
ENM3218	Fluid Mechanics*	JO	–	B
ENS3190	Mechanics of Solids*	–	JO	B
ENS3242	Soil Mechanics and Foundation Engineering*	JO	–	B

UNDERGRADUATE

SEE BELOW FOR A LIST OF POPULAR UNITS

JO Available on the Joondalup Campus

ML Available on the Mount Lawley Campus

BU Available on the South West (Bunbury) Campus

* This unit has a prerequisite and is subject to ECU approval

	SEMESTER 1	SEMESTER 2	FEE GROUP
ENS2260 Surveying and Site Measurement*	JO	–	A
ENS5214 Transportation Engineering*	JO	–	B

COMPUTER SYSTEMS

ENS2344 Computer Architecture*	–	JO	B
ENS2456 Digital Electronics*	JO	–	B
ENS5251 Digital Signal Processing*	–	JO	B
ENS2257 Microprocessor Systems*	–	JO	B
ENS5204 Real-time Embedded Systems*	–	JO	B

ELECTRICAL AND RENEWABLE ENERGY ENGINEERING

ENS3551 Electrical Networks*	JO	–	B
ENS5360 Power Electronics*	JO	–	B
ENS5562 Renewable Energy Conversions 1*	JO	–	B
ENS3553 Signals and Systems*	–	JO	B
ENS5445 Sustainability and Renewable Energy*	–	JO	B

ELECTRICAL POWER

ENS2457 Analog Electronics*	–	JO	B
ENS5253 Control Systems*	JO	–	B
ENS2456 Digital Electronics*	JO	–	B
ENS5360 Power Electronics*	JO	–	B
ENS3206 Power Systems 1*	–	JO	B
ENS3553 Signals and Systems*	–	JO	B

INSTRUMENTATION CONTROL AND AUTOMATION/ ELECTRONICS AND COMMUNICATIONS ENGINEERING

ENS2457 Analog Electronics*	–	JO	B
ENS5253 Control Systems*	JO	–	B
ENS3554 Data Communications and Computer Networks*	JO	–	A
ENS2456 Digital Electronics*	JO	–	B
ENS5203 Electronic Circuit Design*	–	JO	B
ENS2257 Microprocessor Systems*	–	JO	B
ENS5447 Propagation and Antennas*	JO	–	B
ENS3553 Signals and Systems*	–	JO	B
ENS3556 Wireless Communication *	–	JO	B

MECHANICAL ENGINEERING

ENS5230 Electrical Machines and Transformers*	–	JO	B
ENS1115 Materials and Manufacturing 1*	JO	–	B
ENS3105 Mechanical Design and Development*	JO	–	B

ENS2170 Principles of Industrial Maintenance*	JO	–	B
ENS2160 Thermodynamics*	–	JO	B

MECHATRONICS ENGINEERING

ENS2456 Digital Electronics*	JO	–	B
ENM2104 Instrumentation and Measurement*	JO	–	B
ENS2257 Microprocessor Systems*	–	JO	B
ENS5442 Robotics 1*	JO	–	A
ENS3553 Signals and Systems*	–	JO	B

PETROLEUM ENGINEERING

ENS5162 Drilling Engineering*	–	JO	B
ENS3125 Petroleum Geology*	–	JO	B
ENS2115 Process Engineering Fundamentals*	JO	–	B
ENS2270 Reservoir Petrophysics and Formation Evaluation*	JO	–	B
ENS3301 Reservoir Thermodynamics and Fluid Properties*	JO	–	B
ENS5564 Unconventional Oil and Gas Resources*	JO	–	B

MOTORSPORTS

ENS5216 Advanced Thermofluids*	–	JO	B
ENS5230 Electrical Machines and Transformers*	–	JO	B
ENS3105 Mechanical Design and Development*	JO	–	B
ENM2209 Race Car Systems*	JO	–	B

KURONGKURL KATITJIN

INDIGENOUS STUDIES

ACS4133 Aboriginal Communities	JO	–	A
EDF3200 Aboriginal Contexts in Early Childhood Education*	–	JO ML	A
EDF3202 Aboriginal Contexts in Primary Education*	BU JO ML	–	A
EDF3203 Aboriginal Contexts in Secondary Education*	ML	ML	A
SWK2111 Aboriginal Histories of the Present	BU	–	A
IAS2340 Blak Matters: Indigenous Science Fiction and Futurisms, Ancient Knowledge for an Exciting Future	–	ML	A
SCH1101 Cultural Studies	JO	JO	A

UNDERGRADUATE

SEE BELOW FOR A LIST OF POPULAR UNITS

JO Available on the Joondalup Campus

ML Available on the Mount Lawley Campus

BU Available on the South West (Bunbury) Campus

* This unit has a prerequisite and is subject to ECU approval

		SEMESTER 1	SEMESTER 2	FEE GROUP
IAS3110	Indigenous Australians, Cultural Competence and Speech Pathology	–	JO	A
IAS3100	Indigenous Health*	JO	JO	A
IAS3303	Political Economy of Indigenous Australia	–	JO	A

MEDICAL & HEALTH SCIENCES

EXERCISE AND SPORTS SCIENCE

SPS1840	Biomechanics and Skill Acquisition	–	JO	A
SPS1750	Coaching Science 1 – Volleyball and Netball	–	JO	A
SPS1755	Coaching Science 2 – Badminton and Soccer	JO	–	A
SPS2750	Coaching Science 3 – Aquatics and Athletics	JO	–	A
SPS3750	Coaching Science 4 – Dance and Australian Rules Football	–	JO	A
SPS1111	Foundations of Fitness and Training	–	BU JO	A
SPS1109	Fundamentals of Football Coaching	JO	–	A
SPS3604	Human Movement – Participation and Inclusion	–	JO	A
NUT2211	Metabolic Biochemistry*	–	JO	B
SPS2516	Motor Learning and Control	–	JO	A
SPS3104	Performance Studies 7	JO	–	A
SPS3530	Principles and Practices of Coaching	–	JO	A
SPS2622	Psychology of Sport, Exercise and Health	JO	–	A
SPS2615	Sports Injury Prevention and Management	JO	–	A

HEALTH PROMOTION, NUTRITION AND PUBLIC HEALTH

ADS1151	Addiction Studies: Fundamental Concepts	JO	JO	A
HST3100	Child and Adolescent Health	BU JO	–	A
HST2120	Community Development in Health Promotion	–	JO	A
NUT1111	Food and Nutrients	–	BU JO	A
HST2124	Health Communication	JO	–	A
HST1125	Health Priorities and Human Behaviour	BU JO	–	A
HST2220	Health Promotion Planning and Administration	–	JO	A
HST1183	Health, Society and Sustainability	–	BU JO	A
HST3101	Healthy Ageing	–	JO	A

NUT1121	Human Nutrition	BU JO	JO	A
HST1120	Introduction to Health Promotion	JO	–	A
NUT1112	Nutrition and Public Health	JO	BU	A
HST1111	Population Health	BU JO	BU JO	A
SPS3120	Psycho-social Aspects in Physical Activity and Chronic Disease	JO	–	A

MEDICAL AND BIOMEDICAL

HST1109	Epidemiology	JO	BU JO	A
MMS3115	Histopathology and Applied Histotechniques*	–	JO	B
SCH1132	Human Evolution and Ecology	–	JO	A
MMS2200	Introduction to Histology and Histotechniques	JO	–	B
SPS1530	Lifespan Growth and Development	BU JO	–	A

OCCUPATIONAL HEALTH AND SAFETY

HST1152	Introduction to Occupational Health and Safety	BU JO	–	A
OHS3404	Managing Occupational Risk	–	JO	A
HST2256	Occupational Hygiene	–	BU JO	A

PARAMEDICAL SCIENCE

PSP3101	Advanced Paramedical Practice 1*	JO	–	B
PSP3103	Advanced Paramedical Practice 2*	–	JO	B
PSP1108	Clinical Skills for Paramedical Practice 1*	–	JO	B
PSP2103	Clinical Skills for Paramedical Practice 2*	–	JO	B
PST2108	Disease States in Emergency Care*	JO	–	B
PST2109	Medical Studies for Paramedics*	–	JO	B
PST1107	Perspectives in Paramedic Professional Practice	JO	–	B
PST3210	Pre Hospital Perspectives in Emergency Management*	–	JO	B
PST1108	Theoretical Perspectives In Paramedical Practice 1*	JO	–	B
PST2102	Trauma Studies for Paramedics*	JO	–	B

UNDERGRADUATE

SEE BELOW FOR A LIST OF POPULAR UNITS

JO Available on the Joondalup Campus

ML Available on the Mount Lawley Campus

BU Available on the South West (Bunbury) Campus

* This unit has a prerequisite and is subject to ECU approval

		SEMESTER 1	SEMESTER 2	FEE GROUP
NURSING & MIDWIFERY				
NURSING				
NUM1102	Communication Skills for Nurses and Midwives*	BU JO	JO	B
NUM1204	Evidence Based Practice in Nursing and Midwifery *	JO	BU JO	B
NUM1203	Health Assessment*	JO	BU JO	B
NUR2402	Healthy Ageing and Chronic Conditions*	JO	BU JO	B
NUM2307	Mental Health and Wellbeing in Clinical Practice 1*	BU JO	JO	B
NUR3503	Nursing Children and Young People*	BU JO	JO	B
SCIENCE				
BIOLOGY AND ENVIRONMENTAL SCIENCE				
SCI2123	Astronomy	–	JO	B
SCI2118	Australian Biota	–	BU JO	B
SCI1182	Case Studies in Science	–	JO	B
SCI1185	Ecology	–	BU JO	B
SCI1187	Form and Function in Biology	BU JO	–	B
SCM2104	Geographical Information Systems	–	BU JO	B
GEO1150	Geography and Environment: People, Pattern, Process	JO	–	A
SCI1193	Introduction to Environmental Science	JO	–	B
SCI1001	Introduction to Sustainability	JO	–	A
SCI1183	Origins and Evolution of Life	–	BU JO	B
SCI1192	Physical Environments	–	BU JO	B
SCI1125	Professional Science Essentials	BU JO	JO	B
SCI3150	Science Project	JO	JO	B
CHEMISTRY				
SCC1123	Chemistry for the Life Sciences	BU JO	–	B
SCC1111	General Chemistry*	JO	–	B
MATHEMATICS AND PHYSICS				
MAT1108	Foundations of Mathematics	–	JO	A
SCP1134	Foundations of Physics	–	JO	B
SCP1132	Introduction to Physics	JO	–	B
MAT1137	Introductory Applied Mathematics*	JO	BU JO	A
MAT1114	Introductory Statistics	BU	JO	A

		SEMESTER 1	SEMESTER 2	FEE GROUP
MAT1252	Mathematics for Computing	JO	JO	A
MAT1250	Mathematics 1*	JO	JO	A
MAT1251	Mathematics 2*	–	JO	A
MAT2107	Statistical Research Methods	–	JO	A
SECURITY AND COMPUTING				
CSG1105	Applied Communications	JO	JO	A
SCY2120	Applied Intelligence	–	JO	A
SCY1108	Building Management Systems	–	JO	A
CSI1101	Computer Security	JO	JO	A
SCY3506	Counter Intelligence	–	JO	A
SCY2112	Counterterrorism	–	JO	A
CSI2102	Information Security	–	JO	A
SCY3107	Intelligence Analysis	JO	–	A
SCY1117	Intelligence Foundations	JO	–	A
CSP2108	Introduction to Mobile Applications Development	–	JO	A
CSP1150	Programming Principles	–	JO	A
SCY3508	Radicalism and Political Extremism	JO	–	A
SCY2108	Security Control Systems	JO	–	A
SCY1118	Security Foundations	JO	–	A
SCY2109	Surveillance Systems	JO	–	A
SCY2107	Threat Detection Systems	–	JO	A
TEACHER EDUCATION				
EARLY CHILDHOOD EDUCATION				
ECS2260	Assessing and Evaluating Young Children's Learning*	–	BU JO ML	A
LAN1009	Communication Skills for Teaching and Learning*	BU JO ML	–	A
AED1240	Drama Arts in Early Childhood Education*	BU JO ML	–	A
SCE2240	Early Childhood Science and Technology Education*	BU JO ML	–	A
ECS2240	Guiding Children's Behaviour in Positive Learning Environments*	BU JO ML	–	A
HPE2260	Health and Physical Education for Young Children*	–	BU JO ML	A
ECS1245	Play and Pedagogy*	–	BU JO ML	A
SSE3260	Social Science Education in Early Childhood*	JO ML	–	A

UNDERGRADUATE

SEE BELOW FOR A LIST OF POPULAR UNITS

JO Available on the Joondalup Campus

ML Available on the Mount Lawley Campus

BU Available on the South West (Bunbury) Campus

* This unit has a prerequisite and is subject to ECU approval

		SEMESTER 1	SEMESTER 2	FEE GROUP
ECS1265	Young Children's Learning and Development*	–	BU JO ML	A

PRIMARY EDUCATION

LIT4260	Children's Literature in the Classroom*	–	JO ML	A
LAN2240	English in the Early Years of Primary School*	BU JO ML	–	A
MAE1250	Foundations of Primary Mathematics*	BU JO ML	–	A
HSS2240	Humanities and Social Science in Primary Schools 1*	BU JO ML	–	A
EDS3240	Including Children with Special Educational Needs*	BU JO ML	–	A
EDU4271	Managing the Behaviour of Students with Special Educational Needs *	BU JO	ML	A
EDU2260	Positive Learning Environments*	–	BU JO ML	A
LAN4131	Teaching Reading in the Primary Classroom*	JO	ML	A
SCE4270	Teaching Integrated Science in Junior Primary Years*	ML	–	A

SECONDARY EDUCATION

EDU2231	Creating Positive Learning Environments*	–	JO ML	A
DTE2110	Design and Technology Education 1*	ML	–	A
MUE4105	Directing School Music Ensembles*	–	ML	A
EDU3104	Diversity in the Secondary Classroom*	–	JO ML	A
HPE2112	Physical Activity, Body, Culture and Identity*	–	JO	A
CSE3152	Teaching Introductory Computer Programming*	–	ML	A
DSE2210	Teaching Senior School Drama*	–	ML	A
HPE3101	Teaching Secondary Health Education*	JO	–	A
HSS2130	Teaching and Learning in Humanities and Social Sciences*	ML	–	A
MSE2101	Teaching Lower Secondary Mathematics*	JO	–	A

WAAPA

DANCE

DAN3901	Ballet 3*	ML	ML	A
DAN3903	Contemporary 3*	ML	ML	A

DAN3902	Performance 3*	ML	ML	A
DAN3904	Related Physical Disciplines 3*	ML	ML	A
DAN3906	Special Topics*	ML	ML	A

DRAMA, THEATRE AND ARTS

ADM2410	Arts in Contemporary Society*	ML	–	A
PAM2016	Arts Management*	ML	ML	A
BPA2110	Australian Theatre*	–	ML	A
ADM1325	Communication in the Arts*	ML	–	A
BPA3545	Creativity and Collaboration in the Performing Arts*	ML	ML	A
PAM2121	Playwriting Workshop 1*	ML	–	A
BPA2006	Site Specific, Participatory and Immersive Performance *	ML	–	A
PAM3104	Stage Combat*	ML	ML	A
DAN2170	The Arts in Historical and Cultural Contexts*	–	ML	A
PAD3103	Theory and Practice of Contemporary Performance*	ML	ML	A
PAM2103	Theory of Directing*	ML	ML	A
BPA3205	Workplace Integrated Learning: Project Exegesis*	ML	ML	A
BPA3115	Workplace Integrated Learning: Written Project Proposal*	ML	ML	A

MUSIC

MUS2526	Classic Ensemble 3*	ML	–	A
MUS1563	Classic Musicianship 1*	ML	–	A
MUS1341	Ensemble Studies 1*	ML	–	A
MUS1342	Ensemble Studies 2*	–	ML	A
MUS1381	Jazz and Contemporary Musicianship 1*	ML	–	A
MUS1390	Music History: Chasin' the Trane - Modern Jazz Takes Hold*	–	ML	A
MUS2614	Music History: Electronic Music Overview* **	–	ML	A
MUS4608	Music History: Film & Media* **	ML	–	A
MUS1490	Music History: Stax, Motown and All Things Soul*	–	ML	A
MUS1140	Music of Our Time: The Australian Musical Landscape*	ML	–	A
MUS2619	Sound Recording*	ML	–	A

POSTGRADUATE

SEE BELOW FOR A LIST OF POPULAR UNITS

JO Available on the Joondalup Campus

ML Available on the Mount Lawley Campus

BU Available on the South West (Bunbury) Campus

* This unit has a prerequisite and is subject to ECU approval

** This unit is 15 credit points

	SEMESTER 1	SEMESTER 2	FEE GROUP
ARTS & HUMANITIES			
CMM5170 Advertising and Brand Awareness	ML	ML	A
DES5102 Design Thinking	–	ML	A
CMM5110 Globalisation, Cultural Diversity and Innovation	ML	–	A
CMM5165 Media and Society in a Globalised World	ML	ML	A
CMM6150 Media and Transnational Asia	ML	ML	A
CMM5180 Public Relations Strategies	ML	ML	A
CSV5105 Research in Community Services	JO	JO	A
VIS5110 Visual Communication	ML	–	A
DES5310 What is Design For?	ML	–	A

BUSINESS & LAW

ACC6010 Accounting Concepts and Applications	JO	JO	A
MKT5325 Applied Digital Marketing	JO	JO	A
FBL6530 Business Events Management	–	JO	A
MAN6706 Developing Individuals, Leaders and Organisations	JO	JO	A
ECF6115 Financial Markets and Institutions	JO	JO	A
HOS6504 Global Hospitality Operations Management	JO	JO	A
MAN5401 Managing Project Scope and Stakeholders	JO	JO	A
MKT6304 New Product Development	JO	JO	A
LAW6501 Principles of Contract and Corporate Law in Business	JO	JO	A
LAW6501 Project Risk Management LAW6501	JO	–	A

ENGINEERING

ENS5543 Engineering Management* **	–	JO	A
ENS6144 Engineering Geology and Rock Mechanics**	–	JO	B
ENS5240 Industrial Control* **	–	JO	B
ENS6146 Instrumentation and Measurement* **	JO	–	B
ENS6138 Principles of Industrial Maintenance* **	JO	–	B

KURONGKURL KATITJIN

EDF6201 Aboriginal Contexts in Early Childhood Education* **	–	ML	A
EDF6202 Aboriginal Contexts in Primary Education* **	BU ML	–	A
EDF6203 Aboriginal Contexts in Secondary Education* **	ML	–	A

MEDICAL & HEALTH SCIENCES

PST5110 Advanced Cardiac Studies	JO	–	B
PST5111 Advanced Medical Studies	JO	–	B
PST5107 Advanced Obstetrics for Paramedics	JO	JO	B
HST6337 Communicable Disease	JO	–	A
HST6333 Diversity, Culture and Health	–	JO	A
PST5200 Extended Care Paramedicine 1	JO	–	B
PST5214 Extended Care Paramedicine 2	JO	–	B
PST6206 Extended Care Paramedicine 3	JO	JO	B
ART6001 Female Reproduction, Fertility and Pathophysiology	JO	–	A
OHS6205 Health, Safety and Workplace Environment	JO	–	A
ART6002 Male Reproduction, Fertility and Pathophysiology	JO	–	A

POSTGRADUATE

SEE BELOW FOR A LIST OF POPULAR UNITS

JO Available on the Joondalup Campus

ML Available on the Mount Lawley Campus

BU Available on the South West (Bunbury) Campus

* This unit has a prerequisite and is subject to ECU approval

** This unit is 15 credit points

		SEMESTER 1	SEMESTER 2	FEE GROUP
SCH6234	Molecular Biology and Genomics	–	JO	A
OHS6132	Occupational Health and Safety Management Systems	–	ML	A
PST6113	Paediatrics for Critical Care Paramedics	–	JO	B
SPS5303	Physiological Testing of Human Performance	JO	JO	A
HST5161	Public Health: Philosophy, Principles and Practice	JO	JO	A
HST6335	Public Health Strategies	JO	–	A
PST6105	Retrieval Medicine	JO	JO	B

NURSING & MIDWIFERY

PSR5101	Managing Risk in the Clinical Environment*	JO	JO	B
NUR6118	Nursing in the Context of Global Health*	JO	JO	B
NUR6121	Palliative Care Nursing*	JO	JO	B
NUR6120	Promoting the Health and Well-Being of Children and Young People*	–	JO	B
NST6101	Teaching and Learning in the Clinical Setting*	JO	JO	B
NUR6117	The Deteriorating Patient*	JO	JO	B

SCIENCE

SCP5320	Advances in Physics 1	JO	JO	B
SCP5323	Advances in Physics 2	JO	JO	B
MAT5212	Biostatistics	JO	JO	A
SCI6150	Biological Databases and Data Mining	–	JO	B
SCI6100	Environmental Monitoring and Investigation	JO	JO	B
SCI6105	Geographical Information Systems and Remote Sensing	JO	–	B
SCI6152	Mass Spectrometry in Systems Biology	–	JO	B

		SEMESTER 1	SEMESTER 2	FEE GROUP
MAT6105	Mathematical Fundamentals	–	JO	A
CSI6202	Network Security	–	JO	A
CSI6201	Networking Technologies	JO	JO	A
CSI6208	Programming Principles	JO	JO	A
CSI6203	Scripting Languages	JO	JO	A

TEACHER EDUCATION

EDU6170	Assessment in Education: Policies, Pedagogy and Equity* **	–	ML	A
ECE6130	Constructing Early Childhood Curriculum* **	ML	ML	A
ECE6150	Contemporary and Comparative Perspectives in Early Childhood Education* **	–	ML	A
AED6150	Dance, Drama and Media Arts Education in Early Childhood* **	–	ML	A
EDU6373	Foundation Studies and Current Issues in Special Education**	ML	–	A
ECE6140	Investigating Young Children's Holistic Learning and Development* **	ML	–	A
EDU6120	Literacy and Numeracy in Teaching and Learning* **	ML	–	A
EDU6160	Leading Education in a Global Context* **	ML	–	A
MSC6110	Mathematics and Technologies for Young Children* **	ML	–	A
SCE6120	Science for Young Children* **	–	ML	A

YOUR STUDY ABROAD JOURNEY —

THE INFORMATION BELOW OUTLINES YOUR STUDY ABROAD JOURNEY, INCLUDING THE ENTRY REQUIREMENTS AND A LOOK AT YOUR FUTURE PATHWAY.



ENGLISH UNDERGRADUATE AND POSTGRADUATE ENTRY

Academic IELTS overall minimum band score of 6.0, with no individual band less than 6.0. Visit the English Competency page for equivalent tests www.ecu.edu.au/future-students/course-entry/english-competency.

You may satisfy English if you have completed 0.375 equivalent full-time load (EFTSL) of your university degree in English and are from Austria, Belgium, Canada, Denmark, Finland, France, Germany, Iceland, Netherlands, Norway, Sweden or Switzerland.

The Study Abroad program can also be packaged with English through one of our pathway providers. Visit www.ecu.edu.au/centres/international-office/our-services/agent-support/pathway-partners for more information.



ACADEMIC UNDERGRADUATE ENTRY (BAND 3)

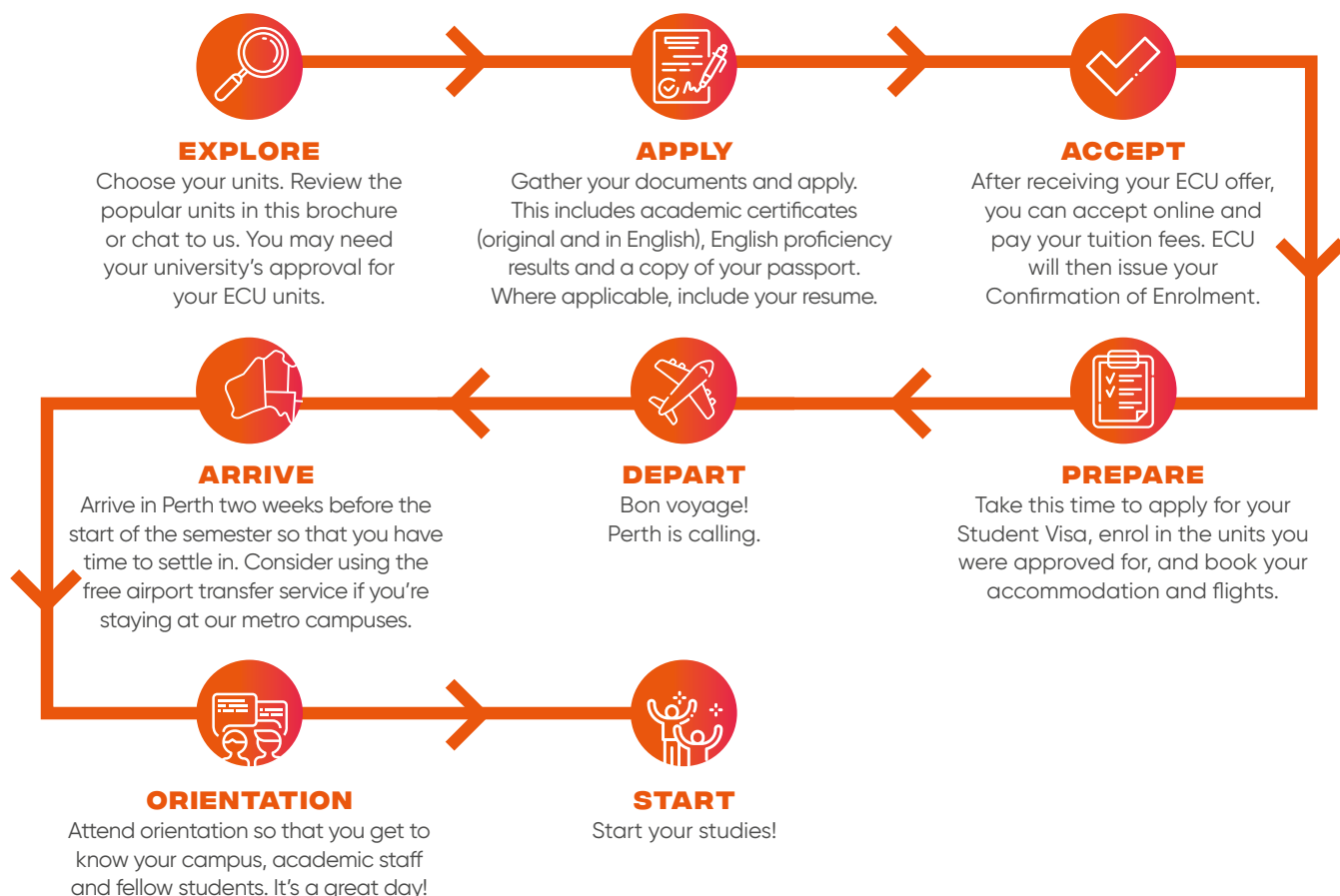
Admission may be satisfied through the completion of secondary schooling, an Australian Qualifications Framework (AQF) qualification or successful completion of 0.25 EFTSL of study at bachelor level or higher at an Australian higher education provider (or equivalent).



ACADEMIC POSTGRADUATE ENTRY (BAND 6)

Admission may be satisfied through the completion of a bachelor (undergraduate) degree or higher.

Further information on academic admission can be found on the Course Entry page www.ecu.edu.au/future-students/course-entry.



FACILITIES, SERVICES & SUPPORT —

OUR EXCELLENT RANGE OF FACILITIES AND SERVICES PROVIDE A SUPPORTIVE LEARNING ENVIRONMENT.



RESOURCES

- Fully-equipped modern libraries
- e-labs available 24/7
- Free Wi-Fi
- Hairdresser JO
- ATMs



STUDENT HUB

- Course information & advice
- Enrolment assistance
- Advice on how to resume a course following deferral / discontinuation
- Advice on extension of time
- Graduation eligibility



SAFETY

- 24/7 security service
- Well-lit pathways
- Emergency phones
- 3258+ parking bays across campuses
- Night security escort
- Security app



HEALTH

- Medical Centres JO ML
- Free Counselling service
- Fully-equipped sports, recreation & fitness centres JO ML
- Mini-gym & playing courts BU



FOOD

- Cafés and other food outlets



SOCIAL

- Student Guild
- Clubs and societies
- University games
- Taverns JO ML



LEARNING

- Academic Mentoring
- Learning Advisers
- Career, Volunteering, Mentoring & Leadership Services
- Equity, Diversity & Disability Services
- Kurungkurl Katitjin (Centre for Indigenous Australian Education & Research)
- LGBTIQ supportive environment



FAMILY

- Childcare
- Parenting rooms
- Crèche
- Kids Holiday Program JO ML

KEY

- JO Joondalup Campus
- ML Mount Lawley Campus
- BU South West (Bunbury) Campus

"In this program, you get the same opportunities as other students to enjoy ECU and to engage in class activity. I will keep pursuing my career after my Study Abroad program and I do believe this amazing experience will help my career development."

Mengdie (Edith) Guo is from China and studied accounting and finance with the School of Business and Law.

STUDENT ACCOMMODATION

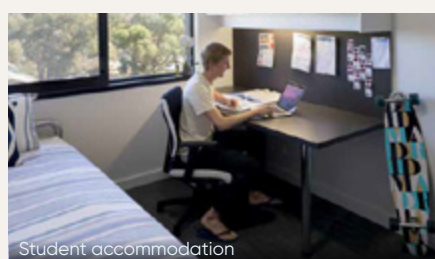
ECU OFFERS INTERNATIONAL STUDENTS A VARIETY OF ACCOMMODATION OPTIONS, INCLUDING ON-CAMPUS VILLAGES, OFF-CAMPUS PRIVATE RENTAL PROPERTIES, AND HOMESTAY WITH A WESTERN AUSTRALIAN FAMILY.



ECU Village - Joondalup Campus



ECU Village - South West Campus



Student accommodation



ECU Village - Mount Lawley Campus



Apartment view

ON-CAMPUS STUDENT VILLAGE

ECU has excellent on-campus accommodation on all three campuses, making it a convenient option for international students.

Facilities include:

- Outdoor pool
- Sporting equipment
- Swipe card-operated laundry (Joondalup)
- Coin-operated laundries (Mount Lawley and Bunbury)
- Communal kitchen
- High speed internet access
- TV room
- BBQs
- Parking

Due to the high demand for on-campus accommodation, we recommend that you visit mystudentvillage.com/au/ecuvillage and make your online application early.

LIVING COSTS

Day-to-day living costs will vary, based on personal situations, interests and financial position. Students should plan a budget to suit their needs, but make sure it's flexible enough to allow for changes in circumstances. Here is a guide to some key weekly expenses.

	Accommodation on-campus	Share house off-campus	Homestay off-campus
Rent	From \$120	\$165-\$300	\$235-\$325
Food	\$80-\$150	\$80-\$150	Included
Transport to University	Walking distance	\$20-\$45	\$20-\$45
Electricity & gas	Included	\$35	Included
Internet	Included	\$10-\$20	\$10-\$20
Mobile phones	\$15	\$15	\$15

*Limited number of accommodation bursaries are available, visit ecu.edu.au/scholarships/offers for more information.

OFF-CAMPUS ACCOMMODATION

Students may choose to rent an apartment, townhouse or house on their own or with fellow students. Private rental accommodation can be furnished or unfurnished.

Get in touch with ECU Village for information on off-campus accommodation rental options.

Visit homestaynetwork.org/edith-cowan-university for more information.

HOMESTAY

Students can also choose to live in a private home with an Australian family. The chance to be involved in daily life, the learning of our culture and customs, plus the added advantage of having the company of other people, are just some of the reasons Homestay is popular.

FREQUENTLY ASKED QUESTIONS

Q

**WHY DO I HAVE
TO CHOOSE UNITS
BEFORE I APPLY?**

A

We assess you for your units at the same time we assess you for your course entry. This saves you a lot of time, particularly when units have prerequisites.

Q

**CAN I CHOOSE
UNITS FROM
ACROSS DIFFERENT
ECU SCHOOLS?**

A

You can. Lots of our students are keen to get a taste of different ECU Schools. This could include three or four Schools if you like.

Q

**WHAT DO YOU MEAN
BY "UNIT"?**

A

A unit refers to the different subject/courses/classes you enrol in. You would enrol in 3-4 units in one semester or 6-8 units in two semesters.

Q

**WHAT IS A UNIT
PREREQUISITE?**

A

A prerequisite is an entry requirement. You may have met standard English and academic entry for the Study Abroad program, but you will also have to meet entry requirements for certain units.

Q

**DO I NEED TO CHAT
WITH MY UNIVERSITY
BACK HOME ABOUT
THE UNITS I CHOOSE?**

A

Absolutely. They will be able to tell you if the ECU units you wish to study will count as credit towards your degree. Unfortunately, we cannot confirm this.

Q

**IS THERE AN APPLICATION
DEADLINE FOR STUDY
ABROAD?**

A

Please keep an eye on the Important Dates page, which lists the recommended application dates www.ecu.edu.au/future-students/applying/important-dates

"The Study Abroad program provided a great update in my practical knowledge, such as learning to handle new equipment with new technologies and new assessment methods available for my work area. In addition, the program helped me to increase my network and enabled better job opportunities in my field."

Marcela Montezano is from Brazil and studied exercise physiology with the School of Medical and Health Sciences.



Q

COULD THE UNITS I STUDY DURING STUDY ABROAD COUNT AS CREDIT TOWARDS AN ECU DEGREE?

A

It is possible. It will all come down to how well the units you have studied in Study Abroad align with your chosen ECU degree. Check out Credit and Recognition of Prior Learning (CRPL) www.ecu.edu.au/my-uni-start/get-started/applying-for-credit-and-recognition-of-prior-learning

Q

DO I NEED HEALTH COVER?

A

Yes, you need Overseas Student Health Cover (OSHC). It is compulsory if you plan to study on a Student Visa. Medibank is ECU's preferred provider, but you can opt for any Government Registered Provider. Your offer letter will tell you more.

Q

IS THERE ANYWHERE I CAN FIND INFORMATION ON WHAT CERTAIN ECU SYSTEMS OR ACRONYMS MEAN?

A

We know it can be difficult getting used to study at a new university, including the names of the different systems and the study language. Please take a moment to look at our Uni-speak Glossary www.ecu.edu.au/my-uni-start/glossary-uni-speak

Q

WHAT IS MY UNI START?

A

My Uni Start is your one-stop place to accept your offer, activate your account, enrol in your units, book orientation and everything in between. Check out My Uni Start today www.ecu.edu.au/my-uni-start/overview

Q

WHAT KIND OF SUPPORT IS AVAILABLE ONCE I BECOME AN ECU STUDENT?

A

The Student Hub is your place. We have Hubs available on all three campuses, with each one dedicated to supporting our current students with matters relating to their studies.

Q

CAN I STILL APPLY IF COVID-19 IS IMPACTING TRAVEL AND BORDER RESTRICTIONS?

A

We encourage you to apply. We can let you know what the situation is at the time and keep you updated. You can also reach out to us about an online Study Abroad semester, as it may be available to you.








ECU IS THE BRIDGE BETWEEN YOUR WORLD, AND THE WHOLE WORLD.

BECOME WORLD READY AT ECU.

Contact

P 134 328
P (61 8) 6304 0000 (Outside Australia)
E international.office@ecu.edu.au
W ecuworldready.com.au

Find us at

-  ECUjourney
-  edithcowanuni
-  edithcowanuniversity
-  school/edith-cowan-university
-  edithcowanuniversity

ECU is committed to reconciliation and recognises and respects the significance of Aboriginal and Torres Strait Islander peoples' communities, cultures and histories. ECU acknowledges and respects the Aboriginal and Torres Strait Islander peoples, as the traditional custodians of the land. ECU acknowledges and respects its continuing association with Noongar people, the traditional custodians of the land upon which its campuses stand.

GREENING ECU: Edith Cowan University is committed to reducing the environmental impact associated with its operations by conducting its activities in a socially and environmentally responsible manner. This includes implementing strategies and technologies that minimise waste of resources and demonstrate environmentally sensitive development, innovation and continuous improvement.

Every effort has been made to ensure that the information in this publication is correct at the time of production. The information is subject to change from time to time and the University requests the right to add, vary or discontinue courses and impose limitations on enrolment in any course. The publication constitutes an expression of interest and is not to be taken as a firm offer or understanding.

